



# BEACH NOURISHMENT

## NEWS AND NOTES

April 2, 2020

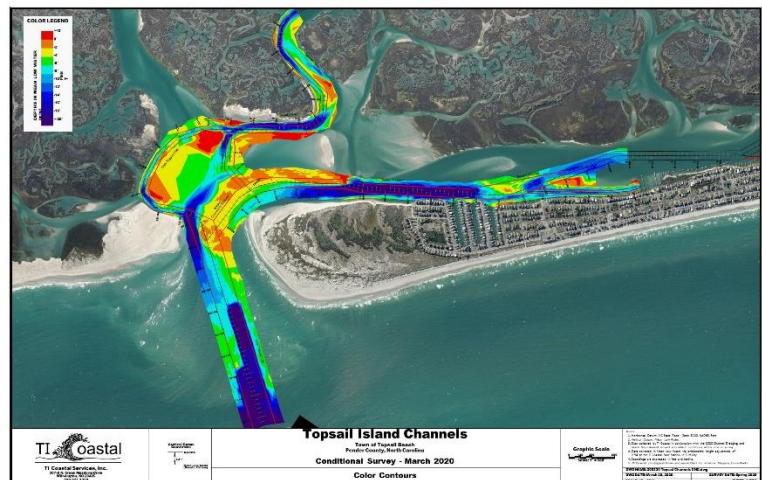
### Dredge Progress

Weeks Marine has made good progress over the last few weeks on both the dredging and the beach nourishment components of our project. The *J.S. Chantry* has focused its dredging efforts at the outer bar and in the inlet, while the *Borinquen* has been working



in the sound. The sand placement from the *J.S. Chantry* started just south of Queens Grant and is nearing the northern town limits. At the same time, the sand placement from the *Borinquen* started at Drum Avenue and has moved north to Darden Avenue. At this time, Weeks Marine officials anticipate the project will continue to move at its current pace barring any major setbacks. Progress maps are updated on a weekly basis and can be found on the Town's website. Look for our new drone footage as well!

The dredging has already shown significant benefit to our waterways as we are seeing more deepwater for our commercial and recreational boaters. This picture reflects a recent survey of the waterway, and we are excited to see so much deep blue! Be sure to visit our website for a larger view.

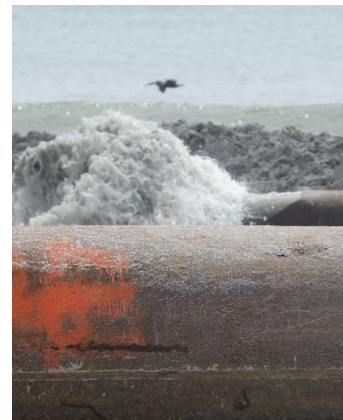


## Crossover Update

The Town is continuing its discussions with representatives from CAMA to clarify what will be allowed for crossovers and when property owners will be allowed to install any structures. The Town's goal is to begin planting sea oats and similar plants on the newly created dune as soon as possible to get it established and protected. With that in mind, we are working to identify alternatives to access from properties, including structures, matting, sand fencing, or other reasonable means. We will communicate the outcome of these discussions once a position is finalized by CAMA.

### BE SAFE

We have noticed that some people have entered the work areas designated by Weeks Marine. These are active work zones with heavy equipment in use. Additionally, the pipes used for the movement of sand utilize extreme pressure and can be dangerous to be around. **For your safety and the safety of the workers, please avoid the designated work areas. DO NOT CROSS THE FENCES AND BARRICADES INTO THE WORK AREAS.**



Be sure to visit our website at [www.topsailbeach.org](http://www.topsailbeach.org) and look for the icon below for more information.



Also watch for us on Facebook!